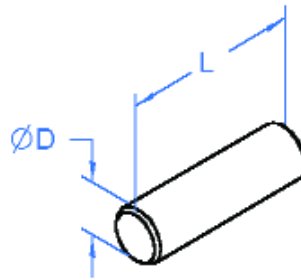




Dowel Pins

Ø1 - Ø6mm



General Information

All dimensions in mm
 General Tolerances:
 ±0.13mm
 Material:
 Stainless steel 300 series.

Associated Products

Pin hub gears
 Shaft collars

Visit our online catalogue for associated products

www.rpmechatronics.co.uk

Part number selection table

Example Part No:- **D 020 - 10**

Basic Part No.	ØD ±0.0025	Diameter Code	Standard Lengths L ±0.25													
			3	4	5	6	8	10	12	14	16	18	20	22	25	
D	1.00	010	3	4	5	6	8	10	12	14						
	1.50	015	3	4	5	6	8	10	12	14	16	18				
	2.00	020	3	4	5	6	8	10	12	14	16	18	20	22		
	2.50	025	3	4	5	6	8	10	12	14	16	18	20	22		
	3.00	030			5	6	8	10	12	14	16	18	20	22	25	
	4.00	040						10	12	14	16	18	20	22	25	
	5.00	050							12	14	16	18	20	22	25	
6.00	060								14	16	18	20	22	25		

- Precision stainless steel dowel pin suitable for accurate location and alignment.
- Suitable for precision location of Reliance's gears on ground shaft.
- Ideal for high torque applications.

Non-standard options, please enquire....

- Imperial sizes.
- Alternative materials.

Standard Product Sales : ☎ +44 (0)1484 601060 📠 +44 (0)1484 601061
 www.rpmechatronics.co.uk sales@rpmechatronics.co.uk

© Reliance Precision Mechatronics LLP