



Shaft Retaining Collars

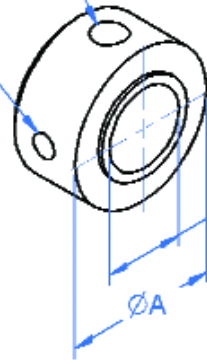
2 - 12mm Bore

General Information

All dimensions in mm
 General Tolerances:
 $\pm 0.13\text{mm}$
 Material:
 Stainless steel.

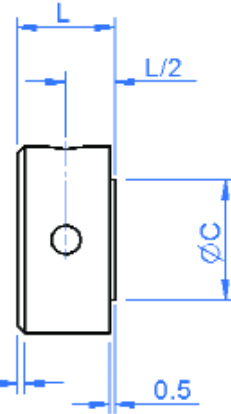
SKT. HD. SET
 SCREW SUPPLIED
 SEE TABLE BELOW

SUB-DRILLED
 $\varnothing D$ PARTWAY



$\varnothing B^{+0.008}$
 -0.005

CHAM
 0.8 X 45°



Associated Products

Bearings
 Shaft - ground stock

Visit our online catalogue for associated products

Part number selection table

Part Number	Bore $\varnothing B$	Length L	O.Dia $\varnothing A$	Shoulder Dia $\varnothing C$	Sub-drill $\varnothing D$	Set Screw Supplied
CSM-2	2.0	5.0	7.0	3.0	0.75	SS-M1.6-2
CSM-3	3.0	5.0	8.0	4.1	0.75	SS-M2-2
CSM-4	4.0	5.0	8.0	5.3	1.00	SS-M2-2
CSM-5	5.0	6.0	10.0	6.7	1.20	SS-M3-3
CSM-6	6.0	6.0	10.0	7.9	1.50	SS-M3-3
CSM-8	8.0	6.0	12.0	10.2	1.80	SS-M4-4
CSM-10	10.0	10.0	19.0	12.3	3.00	SS-M5-4
CSM-12	12.0	11.0	25.0	15.2	3.00	SS-M6-6

www.rpmechatronics.co.uk

Non-standard options, please enquire....

- Imperial sizes.

Standard Product Sales : ☎ +44 (0)1484 601060 📠 +44 (0)1484 601061
 www.rpmechatronics.co.uk sales@rpmechatronics.co.uk

© Reliance Precision Mechatronics LLP