

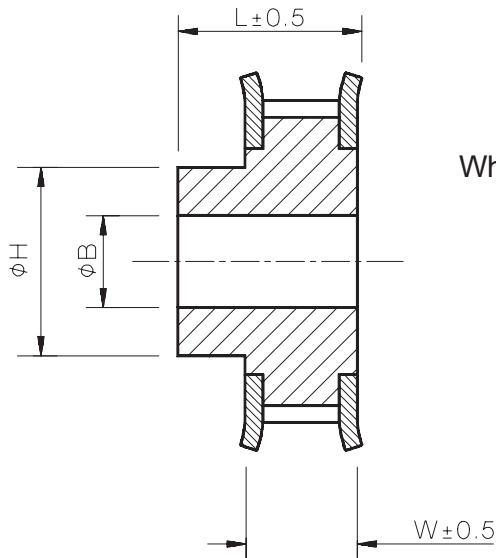
# Timing Pulleys

**METRIC**  
**5 mm pitch**



**Associated Products**  
Shafts

All dimensions in mm  
General tolerances +/- 0.13mm  
Material: Free machining  
aluminium alloy pulley  
Zinc plated steel flanges



When Belt width = 10, W=15 & L=21  
Belt width = 16, W=21 & L=27

**Additional options**

- zero backlash
- 0, 1 or 2 flanges
- with tapped holes
- keyed bores
- hubless
- any boss size/length

Operates with TXM50 series timing belts (page 4).

Part Number Selection Table						
<i>Example Part No. - TPMP50 F10- 60</i>						
Basic Part Number	Belt Width	No. of teeth	Pitch Diameter	Bore $\phi B$ (H7)	Hub Diameter $\phi H \pm 1.0$	Backlash
TPMP50	10mm F10-	10	15.92	4	8	$\pm 0.08\text{mm}$
		12	19.10	4	12	
		14	22.28	6	14	
		15	23.87	6	16	
		16	25.46	6	18	
		18	28.65	6	20	
	or 16mm F16-	19	30.24	6	22	$\pm 0.15\text{mm}$
		20	31.83	6	24	
		24	38.20	6	26	
		25	39.79	6	26	
		27	42.97	8	30	
		30	47.75	8	34	
		32	50.93	8	38	
		36	57.30	8	38	
		40	63.66	8	40	
		48	76.39	8	50	
60	95.49	8	65			

Pulleys with 48 and 60 teeth are unflanged.

Standard Product Sales : ☎ +44 (0)1484 601060 📠 +44 (0)1484 601061

www.rpmechatronics.co.uk

sales@rpmechatronics.co.uk

© Reliance Precision Mechatronics LLP