

Cable Chain

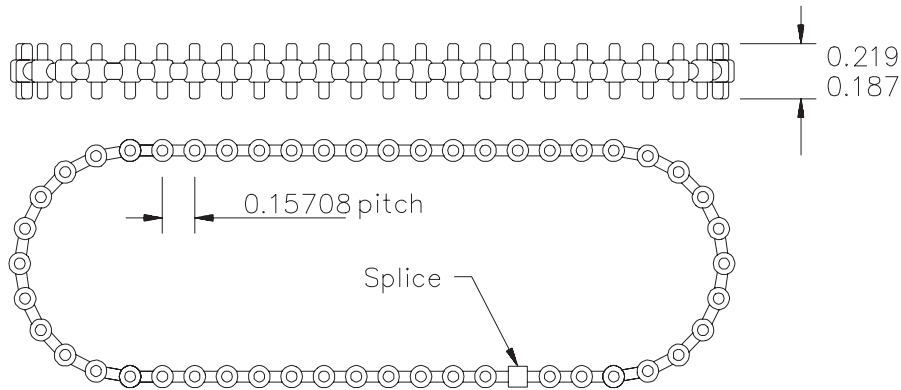
INCH
0.15708" pitch



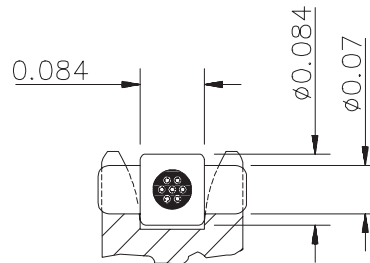
Associated Products

Sprockets - 6mm bore
Sprockets - 1/4" bore

All dimensions in inches
General tolerances +/- 0.010"
Material: Stainless steel
reinforced polyurethane



- Minimum backlash
- Silent chain
- No lubrication required
- Positive drive
- Not suitable for reverse bending applications
- Weight: 11.2 g/m (0.12 oz/ft)
- Temperature range: -50°C to +80°C
- Max load per pin: 1.3 N (0.3lbs)
- Max operating tensile strength: 66.7 N (15lbs)



Part Number	No. of pitches	Length inches
3CBF-30-E	30	4.712
3CBF-35-E	35	5.498
3CBF-40-E	40	6.283
3CBF-45-E	45	7.069
3CBF-50-E	50	7.854
3CBF-55-E	55	8.639
3CBF-60-E	60	9.425
3CBF-70-E	70	10.996
3CBF-80-E	80	12.566
3CBF-90-E	90	14.137
3CBF-100-E	100	15.708
3CBF-110-E	110	17.279
3CBF-120-E	120	18.850
3CBF-130-E	130	20.420
3CBF-140-E	140	21.991
3CBF-150-E	150	23.562
3CBF-160-E	160	25.133
3CBF-170-E	170	26.704
3CBF-180-E	180	28.274
3CBF-190-E	190	29.845
3CBF-200-E	200	31.416

Part Number	No. of pitches	Length inches
3CBF-210-E	210	32.987
3CBF-220-E	220	34.558
3CBF-230-E	230	36.128
3CBF-240-E	240	37.699
3CBF-250-E	250	39.270
3CBF-260-E	260	40.841
3CBF-270-E	270	42.412
3CBF-280-E	280	43.982
3CBF-290-E	290	45.553
3CBF-300-E	300	47.124
3CBF-310-E	310	48.695
3CBF-320-E	320	50.266
3CBF-330-E	330	51.836
3CBF-340-E	340	53.407
3CBF-350-E	350	54.978
3CBF-360-E	360	56.549
3CBF-370-E	370	58.120
3CBF-380-E	380	59.690
3CBF-400-E	400	62.832
3CBF-420-E	420	65.974
3CBF-440-E	440	69.115

May be purchased in open lengths up to 100 feet.

Example part number: **3CBF-75FT**

Standard Product Sales : ☎ +44 (0)1484 601060 📠 +44 (0)1484 601061

www.rpmechatronics.co.uk

sales@rpmechatronics.co.uk

© Reliance Precision Mechatronics LLP