

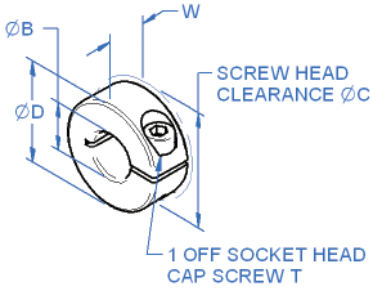


Clamp Collars

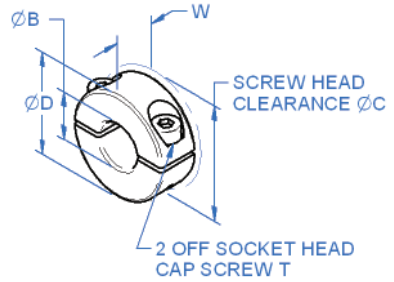
3-10mm Bore

General Information

All dimensions in mm
 Manufactured by
 Ruland Corp
 Material:
 Aluminium alloy
 grade 2024.T351
 Stainless steel
 grade 18.8 type 303



MCL (1-piece)



MSP (2-piece)

Associated Products

Shafts
 Bearings
 Leadscrews

Visit our online catalogue for associated products

Part number selection table

Example Part No:- MCL-A-3			Dimensions (mm)				
Basic Part No.	Material	Size	Standard Bore Sizes ØB	O/D	Width	Forged Clamp Screw T	
				ØD	W		ØC
MCL (1-piece)	A (Aluminium)	3	3	16	9	20.8	M3
		4	4	16	9	20.8	M3
		5	5	16	9	20.8	M3
		6	6	16	9	20.8	M3
MSP (2-piece)	SS (St. Steel)	7	7	18	9	22.4	M3
		8	8	18	9	22.4	M3
		9	9	24	9	26.3	M3
		10	10	24	9	26.3	M3

Imperial bores (1/8" to 3/8") available, please enquire.

Non-standard options, please enquire....

- Non-standard bore sizes, including imperial.
- Stainless steel screws.
- Plastic collars available.

Technical features

- Does not mark shaft.
- Integral location face.
- MSP, two-piece style is balanced by opposing hardware and is easily disassembled and maintained.
- Width tolerance: +0.08mm/-0.25mm.
- Pre-drilled face holes.



www.rpmechatronics.co.uk