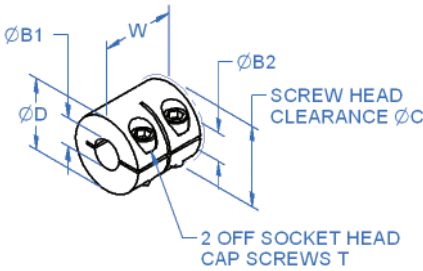
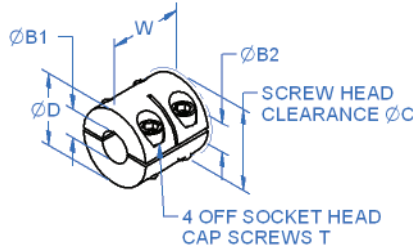


6-10mm Bore

Double Wide Clamp Collars



MWCL (1-piece)



MWSP (2-piece)

General Information

All dimensions in mm
 Manufactured by Ruland Corp
 Material:
 Aluminium alloy grade 2024.T351
 Stainless steel grade 18.8 type 303

Associated Products

Shafts
 Bearings
 Leadscrews

Visit our online catalogue for associated products

Part number selection table

Example Part No:- MWCL-A-6			Dimensions (mm)				
Basic Part No.	Material	Size	Standard Bore Sizes ØB1 and ØB2 (bore tolerance +0.05/-0.00)	O/D	Width	Forged Clamp Screw T	
				ØD	W		ØC
MWCL (1-piece)	A (Aluminium)	6	6	16	20	20.8	M3
MWSP (2-piece)	SS* (St. Steel)	8 10	8 10	18 24	20 20	22.4 26.3	M3 M3

Imperial bores (1/8" to 1/2") available, please enquire.
 *Stainless steel is only available on MWSP

Non-standard options, please enquire....

- Non-standard bore sizes, including imperial.
- Set screw clamping.
- Stainless steel screws.

Technical features

- Does not mark the shaft.
- Integral location face.
- Excellent for high axial loads.
- MWSP, two-piece style is balanced by opposing hardware and is easily disassembled and maintained.
- Transmits torque in confined spaces.



www.rpmechatronics.co.uk