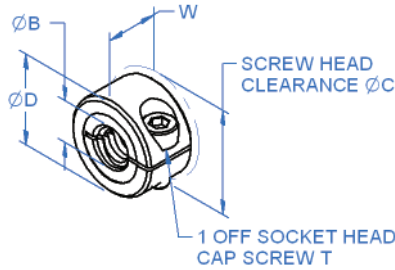


One-Piece Threaded Collars



MTCL (threaded)

General Information

All dimensions in mm
 Manufactured by
 Ruland Corp
 Material:
 Stainless steel
 grade 18.8 type 303

Associated Products

Shafts
 Bearings
 Leadscrews

Visit our online catalogue for associated products

Part number selection table

Example Part No:- MTCL-SS-4			Dimensions (mm)				
Basic Part No.	Material	Size	Standard Bore Sizes ØB	O/D	Width	Forged Clamp Screw T	
				ØD	W		ØC
MTCL	SS	4	M4x0.7	16	9	20.8	M3
		5	M5x0.8	16	9	20.8	M3
		6	M6x1	16	9	20.8	M3
		8	M8x1.25	18	9	22.4	M3
		10	M10x1.5	24	9	26.3	M3

Non-standard options, please enquire....

- Non-standard bore sizes, including imperial.
- Stainless steel screws.
- Acme and left-hand threads available.
- Additional sizes available.

Technical features

- Does not mark shaft.
- Integral location face.
- Width tolerance: +0.008mm/-0.25mm.



www.rpmechatronics.co.uk