



Clamp Hub Spur Gear

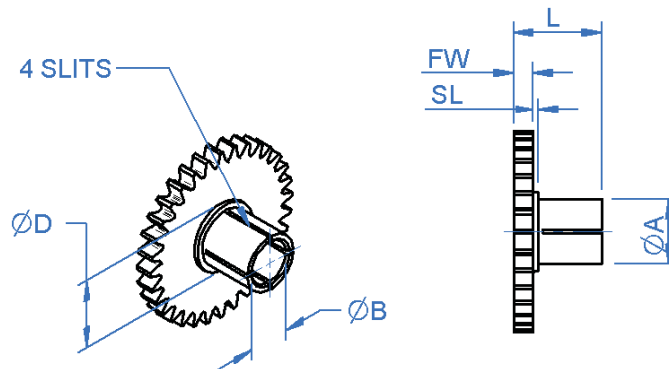
2 - 5mm Bore

General Information

All dimensions in mm
General tolerances:
±0.13mm

Material:
Stainless steel
or
Aluminium alloy

Pressure angle 20°



Associated Products

Anti-backlash gears
Shafts
Bearings
Gear clamps

Visit our online catalogue for associated products

Drawing dimension table

| Bore Size Nom | Bore Dia ØB | Overall Length L | Gear Face width FW | Clamp Dia ØA | Shoulder Dia ØD | Shoulder Length SL | Recommended Clamp # |
|---------------|-------------|------------------|--------------------|--------------|-----------------|--------------------|----------------------|
| 2 | 2.003 | 7 | 2 | 3.60 | 7.4 | 0.50 | CGAM-2A or CGM1-2 |
| | 1.995 | 9 | 4 | 3.56 | | | |
| 3 | 3.003 | 7 | 2 | 4.60 | 6.6 | 0.50 | CGAM-3A or CGM1-3 |
| | 2.995 | 9 | 4 | 4.56 | | | |
| 4 | 4.003 | 9 | 2 | 5.60 | 8.4 | 0.50 | CGAM-4A or CGM1-4 |
| | 3.995 | 11 | 4 | 5.56 | | | |
| 5 | 5.003 | 9 | 2 | 6.60 | 7.6 | 0.50 | CGAM-5A or CGM1-5 |
| | 4.995 | 11 | 4 | 6.56 | | | |

See gear clamps on pages 52 - 53 for information.

- Standard gear quality AQ10 - see page 56.
- Material and treatment specifications - see page 59.

Non-standard options, please enquire....

- Higher gear qualities - see page 56.
- Special 0.120" bore to suit resolvers available.
- Alternative modules.
- Imperial diametral pitches.
- Imperial bore sizes 5/64", 0.120", 1/8" & 3/16".
- Larger numbers of teeth.

Standard Product Sales : ☎ +44 (0)1484 601060 📠 +44 (0)1484 601061
www.rpmechatronics.co.uk sales@rpmechatronics.co.uk

© Reliance Precision Mechatronics LLP



Part number selection table

Example Part No:- **C06S1B5 F2A- 25**

| Bore Size Nom | Standard Modules | Basic Part Number Standard Materials | | Face Width Dim FW | Number of Teeth | | |
|---------------|------------------|--------------------------------------|-----------------|--------------------------------|-----------------|------|-----|
| | | Stainless Steel | Aluminium Alloy | | Min | Max | |
| | | | | F2A | | F4A | |
| 2 | 0.6 | C06S1B2 | C06A1B2 | F2A- (2mm) or F4A- (4mm) | 14 † | 56 | 127 |
| | 0.5 | C05S1B2 | C05A1B2 | | 14 † | 67 | 152 |
| | 0.4 | C04S1B2 | C04A1B2 | | 15 † | 85 | 190 |
| | 0.3 | C03S1B2 | C03A1B2 | | 17 | 114 | 254 |
| | 0.25 | C025S1B2 | C025A1B2 | | 18 | 137 | 304 |
| | 0.2 | C02S1B2 | C02A1B2 | | 20 | 172 | 381 |
| 3 | 0.6 | C06S1B3 | C06A1B3 | F2A- (2mm) or F4A- (4mm) | 15 † | 25 # | |
| | 0.5 | C05S1B3 | C05A1B3 | | 16 † | 29 # | |
| | 0.4 | C04S1B3 | C04A1B3 | | 18 | 36 # | |
| | 0.3 | C03S1B3 | C03A1B3 | | 20 | 47 # | |
| | 0.25 | C025S1B3 | C025A1B3 | | 22 | 56 # | |
| | 0.2 | C02S1B3 | C02A1B3 | | 25 | 69 # | |
| 4 | 0.6 | C06S1B4 | C06A1B4 | F2A- (2mm) or F4A- (4mm) | 17 | 25 # | |
| | 0.5 | C05S1B4 | C05A1B4 | | 18 | 29 # | |
| | 0.4 | C04S1B4 | C04A1B4 | | 20 | 36 # | |
| | 0.3 | C03S1B4 | C03A1B4 | | 24 | 47 # | |
| | 0.25 | C025S1B4 | C025A1B4 | | 26 | 56 # | |
| | 0.2 | C02S1B4 | C02A1B4 | | 30 | 69 # | |
| 5 | 0.6 | C06S1B5 | C06A1B5 | F2A- (2mm) or F4A- (4mm) | 19 | 25 # | |
| | 0.5 | C05S1B5 | C05A1B5 | | 20 | 29 # | |
| | 0.4 | C04S1B5 | C04A1B5 | | 23 | 36 # | |
| | 0.3 | C03S1B5 | C03A1B5 | | 27 | 47 # | |
| | 0.25 | C025S1B5 | C025A1B5 | | 30 | 56 # | |
| | 0.2 | C02S1B5 | C02A1B5 | | 35 | 69 # | |

General Information

All dimensions in mm
 General tolerances:
 ±0.13mm
 Material:
 Stainless steel
 or
 Aluminium alloy
 Pressure angle 20°

Associated Products

Anti-backlash gears
 Shafts
 Bearings
 Gear clamps
 Visit our online catalogue for associated products

www.rpmechatronics.co.uk

† Gears of 16 teeth or fewer will be modified, see page 63.

For greater numbers of teeth, see Reli-a-Grip™ gears on page 24. Although larger numbers of teeth are available on this style if required.

