



Ball Bearing Journal with Circlip groove, End B

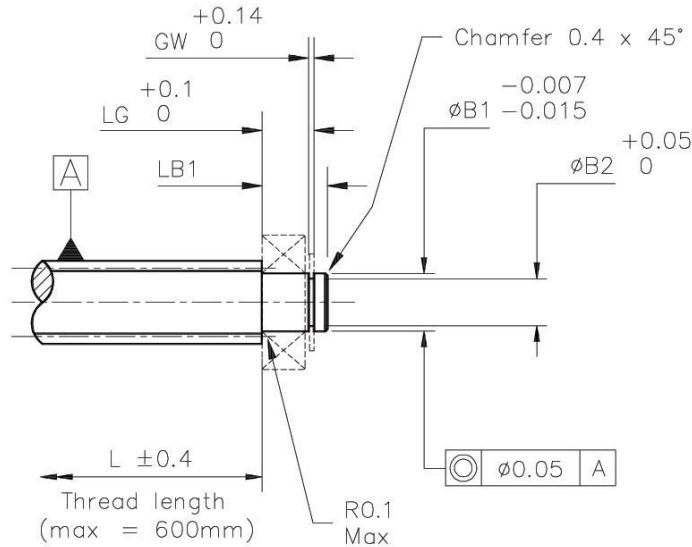
Refer to page 16 for ordering instructions and available associated product part numbers.

General Information

All dimensions in mm
General tolerances:
±0.13mm

Associated Products

Visit our online catalogue for associated products at:



Drawing dimension table

Leadscrew Series	Screw Diameter	Journal		Groove		Length LB1
		Dia ØB1	Length LG	Dia ØB2	Width GW	
LAF6, LPX6	6.35	4	4.8	3.75	0.5	7.0
LAF10, LAK10, LPX10	9.53	6	6.1	5.65	0.8	8.5
LAF11, LPX11	11.11	8	7.2	7.54	0.9	9.5
LAF13, LAX13, LPX13	12.70	8	7.2	7.54	0.9	9.5

www.rpmechatronics.co.uk

- End modification engineered to maximise the linear accuracy of the leadscrew.
- Custom end machining also available, please fax or e-mail your drawing.
- Full technical support available on both standard and custom end machining.
- Quantities up to 10 off available in 2 weeks.



Standard Product Sales : ☎ +44 (0)1484 601060 📠 +44 (0)1484 601061
www.rpmechatronics.co.uk sales@rpmechatronics.co.uk

© Reliance Precision Mechatronics LLP