



Leadscrew End Machining

Drive End

Ball Bearing Journal for Drive Gear, End F

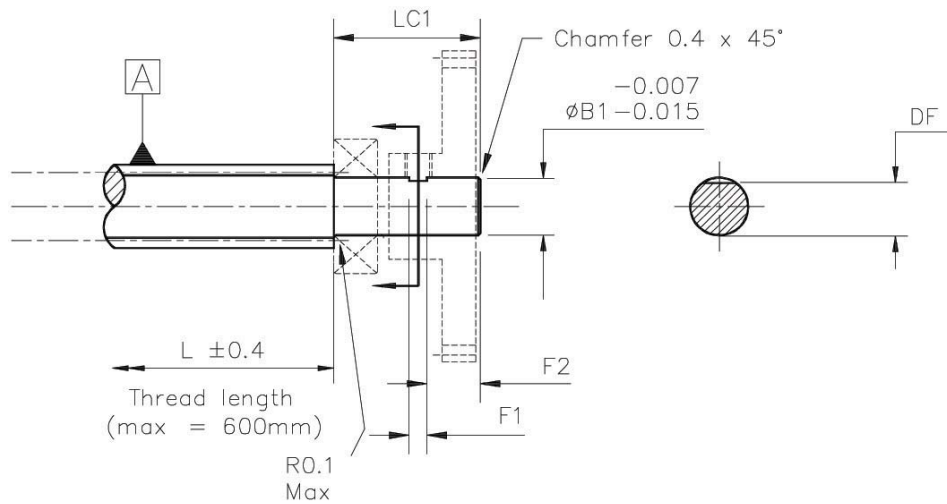
Refer to page 16 for ordering instructions and available associated product part numbers.

General Information

All dimensions in mm
General tolerances:
±0.13mm

Associated Products

Visit our online catalogue for associated products at:



Drawing dimension table

Leadscrew Series	Screw Dia	Journal		Flat Width F1	Length F2	Flat Distance DF
		Dia $\phi B1$	Length LC1			
LAF6, LPX6	6.35	4	17.5	4	5.0	3.5
LAF10, LAK10, LPX10	9.53	6	20.5	5	6.5	5.5
LAF11, LPX11	11.11	8	21.5	6	6.0	7.5
LAF13, LAX13, LPX13	12.70	8	21.5	6	6.0	7.5

www.rpmechatronics.co.uk

- End modification engineered to maximise the linear accuracy of the leadscrew.
- Custom end machining also available, please fax or e-mail your drawing.
- Full technical support available on both standard and custom end machining.
- Quantities up to 10 off available in 2 weeks.

