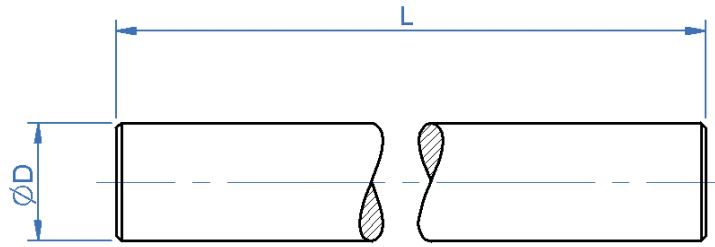




Linear Motion Shafting

Induction Hardened



General Information

All dimensions in mm
 General tolerances:
 ±0.13mm
 Material:
 Bearing steel SUJ2
 Stainless steel 440C
 Surface finish:
 1.5µm Rz
 Straightness: L/D (µm)
 Hardness: 58-63HRC

Associated Products

Linear bearings

Visit our online catalogue for associated products at:

www.rpmechatronics.co.uk

Part number selection table

Example Part No.- **RS-3-400**

Basic Part Number	Outside Dia ØD	Outside Dia Tol		Available Lengths L										
		Max	Min	100	200	300	400	500	600	800	1000	1200	1500	
RS-3	3	-0.009	-0.017	•#	•#	•#	•#							
RS-4	4			•#	•#	•#	•#							
RS-5	5			•#	•#	•#	•#							
RS-6	6			•#	•#	•#	•#	•#	•#	•#	•#	•#		
RS-8	8	-0.010	-0.019	•#	•#	•#	•#	•#	•#	•#	•#			
RS-10	10			•#	•#	•#	•#	•#	•#	•#	•#	#	•#	
RS-12	12			•	•#	•#	•#	•#	•#	•#	•#	•#	#	•#

- SUJ2 bearing steel.
- # SUS440C stainless steel.

- Standard material = SUJ2 bearing steel, for stainless steel, add **-SS** to the part number.

Non-standard options, please enquire....

- Ultra precision (straightness 0.5 L/D) on both SUJ2 and 440C shafts.
- Reduced clearance shafts manufactured to h6 tolerance.
- Custom end machining available to order.
- Non-standard lengths available.

Standard Product Sales : ☎ +44 (0)1484 601060 📠 +44 (0)1484 601061
 www.rpmechatronics.co.uk sales@rpmechatronics.co.uk