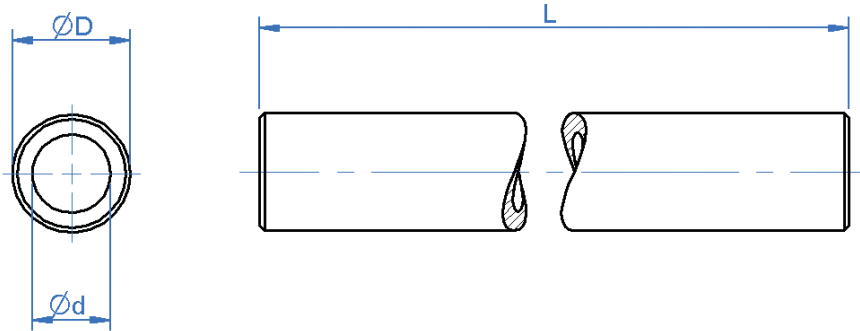


Hollow Linear Motion Shafting



General Information

All dimensions in mm
 General tolerances: ±0.13mm
 Material: Bearing steel SUJ2
 Surface finish: 1.5µm Rz
 Straightness: L/D (µm)
 Hardness: 58-63HRc

Part number selection table

Example Part No.- **RPS-10-500**

Basic Part Number	Outside Dia ØD	Outside Dia Tol		Inside Dia Ød	Available Lengths L				
		Max	Min		500	700	1000	1200	1500
RPS-10	10	-0.010	-0.019	4	•	•	•	•	•
RPS-12	12			6	•	•	•	•	•

Associated Products

Linear bearings
 Visit our online catalogue for associated products at:

• SUJ2 bearing steel.

Non-standard options, please enquire....

- Ultra precision (straightness 0.5 L/D).
- Reduced clearance shafts manufactured to h6 tolerance.
- Custom end machining available to order.
- Non-standard lengths available.

www.rpmechatronics.co.uk