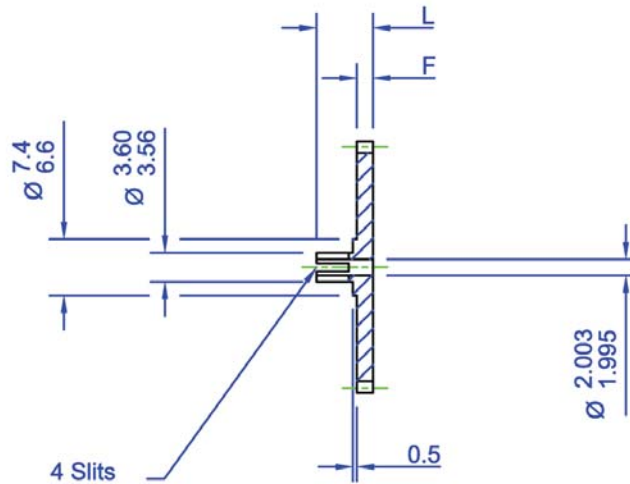




All dimensions in mm
 General tolerances $\pm 0.13\text{mm}$
 Pressure angle 20°

Associated Online Products
 Anti-backlash clamp hub gears
 Shafts
 Bearings
 Clamps

When $F=2, L=7$
 $F=4, L=9$



4

Part number selection table

Example Part No:- C06S1B2 F2A- 25						
Standard Modules	Basic Part Number Standard Materials #		Face Width	Number of Teeth		
	Stainless Steel	Aluminium Alloy	Dim F	Min	Max	
					F2A	F4A
1.50	C150S1B2	C150A1B2	F2A- (2mm) or F4A- (4mm)	12 †	21	72
1.25	C125S1B2	C125A1B2		12 †	25	86
1.0	C10S1B2	C10A1B2		12 †	32	109
0.8	C08S1B2	C08A1B2		13 †	41	136
0.6	C06S1B2	C06A1B2		14 †	56	183
0.5	C05S1B2	C05A1B2		14 †	67	220
0.4	C04S1B2	C04A1B2		15 †	85	275
0.3	C03S1B2	C03A1B2		17	114	368
0.25	C025S1B2	C025A1B2		18	137	442
0.2	C02S1B2	C02A1B2		20	172	553

† Gears of 16 teeth or fewer will be modified, see page 109

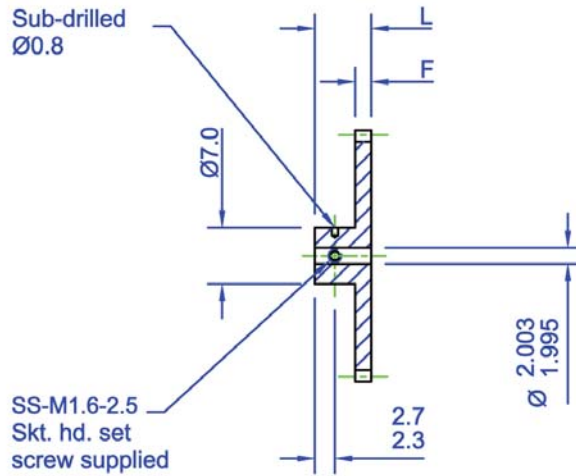
Alternative materials - replace **S1** in the part number with **B2** for brass, or **S9** for hardened stainless steel

- Standard gear quality AQ10 (AQ9 for 1.5 mod) - see page 102
- For suitable clamps - see pages 98-99
- Material and treatment specifications - see page 105
- Higher gear qualities - see page 102
- Imperial diametral pitches available
- Imperial 5/64" bore available

Associated Online Products

Anti-backlash pin hub gears
Shafts
Bearings
Pins

All dimensions in mm
General tolerances $\pm 0.13\text{mm}$
Pressure angle 20°



When $F=2, L=7$
 $F=4, L=9$

Part number selection table

Example Part No:- P06S1B2 F2A- 25						
Standard Modules	Basic Part Number		Face Width	Number of Teeth		
	Standard Materials #		Dim F	Min	Max	
	Stainless Steel	Aluminium Alloy			F2A	F4A
1.50	P150S1B2	P150A1B2	F2A- (2mm) or F4A- (4mm)	12 †	21	72
1.25	P125S1B2	P125A1B2		12 †	25	86
1.0	P10S1B2	P10A1B2		12 †	32	109
0.8	P08S1B2	P08A1B2		13 †	41	136
0.6	P06S1B2	P06A1B2		15 †	56	183
0.5	P05S1B2	P05A1B2		18	67	220
0.4	P04S1B2	P04A1B2		21	85	275
0.3	P03S1B2	P03A1B2		27	114	368
0.25	P025S1B2	P025A1B2		31	137	442
0.2	P02S1B2	P02A1B2		38	172	553

† Gears of 16 teeth or fewer will be modified, see [page 109](#)

Alternative materials - replace **S1** in the part number with **B2** for brass, or **S9** for hardened stainless steel

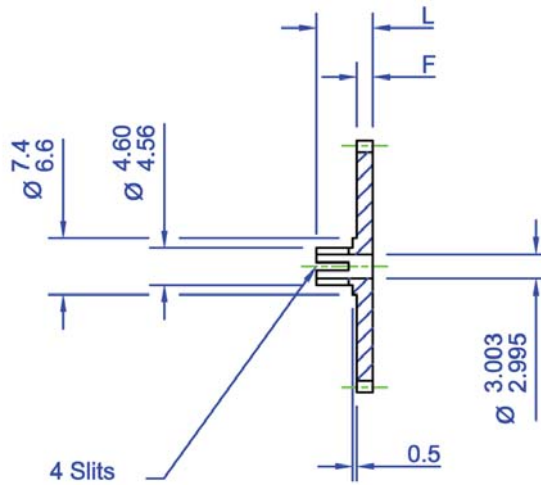
- Standard gear quality AQ10 (AQ9 for 1.5 mod) - see [page 102](#)
- Material and treatment specifications - see [page 105](#)
- Higher gear qualities - see [page 102](#)
- Imperial diametral pitches available
- Imperial 5/64" bore available



All dimensions in mm
 General tolerances $\pm 0.13\text{mm}$
 Pressure angle 20°

Associated Online Products
 Anti-backlash clamp hub gears
 Shafts
 Bearings
 Clamps

When $F=2, L=7$
 $F=4, L=9$



4

Part number selection table

Example Part No:-						
C06S1B3 F2A- 25						
Standard Modules	Basic Part Number Standard Materials #		Face Width	Number of Teeth		
	Stainless Steel	Aluminium Alloy	Dim F	Min	Max	
					F2A	F4A
1.50	C150S1B3	C150A1B3	F2A- (2mm) or F4A- (4mm)	12 †	21	72
1.25	C125S1B3	C125A1B3		13 †	25	86
1.0	C10S1B3	C10A1B3		13 †	32	109
0.8	C08S1B3	C08A1B3		14 †	41	136
0.6	C06S1B3	C06A1B3		15 †	56	183
0.5	C05S1B3	C05A1B3		16 †	67	220
0.4	C04S1B3	C04A1B3		18	85	275
0.3	C03S1B3	C03A1B3		20	114	368
0.25	C025S1B3	C025A1B3		22	137	442
0.2	C02S1B3	C02A1B3		25	172	553

† Gears of 16 teeth or fewer will be modified, see [page 109](#)

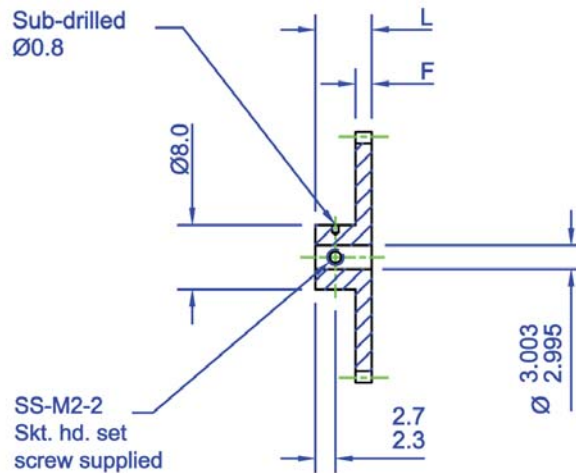
Alternative materials - replace **S1** in the part number with **B2** for brass, or **S9** for hardened stainless steel

- Standard gear quality AQ10 (AQ9 for 1.5 mod) - see [page 102](#)
- For suitable clamps - see [pages 98-99](#)
- Material and treatment specifications - see [page 105](#)
- Higher gear qualities - see [page 102](#)
- Imperial diametral pitches available
- Imperial 1/8" bore available

Associated Online Products

Anti-backlash pin hub gears
Shafts
Bearings
Pins

All dimensions in mm
General tolerances $\pm 0.13\text{mm}$
Pressure angle 20°



When $F=2, L=7$
 $F=4, L=9$

Part number selection table

Example Part No:- P06S1B3 F2A- 25						
Standard Modules	Basic Part Number		Face Width	Number of Teeth		
	Standard Materials #		Dim F	Min	Max	
	Stainless Steel	Aluminium Alloy			F2A	F4A
1.50	P150S1B3	P150A1B3	F2A- (2mm)	12 †	21	72
1.25	P125S1B3	P125A1B3		13 †	25	86
1.0	P10S1B3	P10A1B3		13 †	32	109
0.8	P08S1B3	P08A1B3		14 †	41	136
0.6	P06S1B3	P06A1B3	F4A- (4mm)	17	56	183
0.5	P05S1B3	P05A1B3		20	67	220
0.4	P04S1B3	P04A1B3		23	85	275
0.3	P03S1B3	P03A1B3		30	114	368
0.25	P025S1B3	P025A1B3		35	137	442
0.2	P02S1B3	P02A1B3		43	172	553

† Gears of 16 teeth or fewer will be modified, see [page 109](#)

Alternative materials - replace **S1** in the part number with **B2** for brass, or **S9** for hardened stainless steel

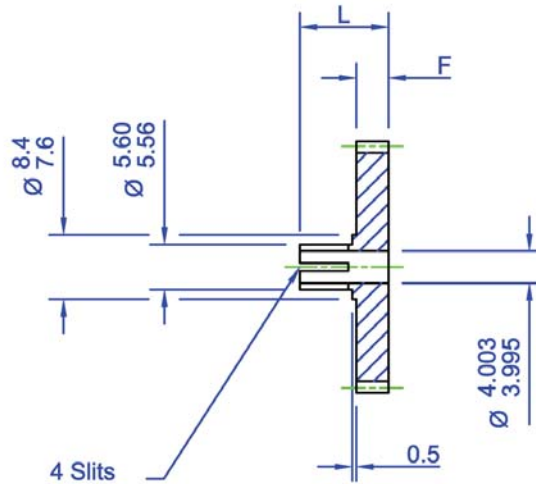
- Standard gear quality AQ10 (AQ9 for 1.5 mod) - see [page 102](#)
- Material and treatment specifications - see [page 105](#)
- Higher gear qualities - see [page 102](#)
- Imperial diametral pitches available
- Imperial 1/8" bore available



All dimensions in mm
 General tolerances $\pm 0.13\text{mm}$
 Pressure angle 20°

Associated Online Products
 Anti-backlash clamp hub gears
 Shafts
 Bearings
 Clamps

When $F=2, L=9$
 $F=4, L=11$



4

Part number selection table

Example Part No:- C06S1B4 F2A- 25						
Standard Modules	Basic Part Number Standard Materials #		Face Width	Number of Teeth		
	Stainless Steel	Aluminium Alloy	Dim F	Min	Max	
					F2A	F4A
1.50	C150S1B4	C150A1B4	F2A- (2mm) or F4A- (4mm)	13 †	21	72
1.25	C125S1B4	C125A1B4		14 †	25	86
1.0	C10S1B4	C10A1B4		14 †	32	109
0.8	C08S1B4	C08A1B4		15 †	41	136
0.6	C06S1B4	C06A1B4		17	56	183
0.5	C05S1B4	C05A1B4		18	67	220
0.4	C04S1B4	C04A1B4		20	85	275
0.3	C03S1B4	C03A1B4		24	114	368
0.25	C025S1B4	C025A1B4		26	137	442
0.2	C02S1B4	C02A1B4		30	172	553

† Gears of 16 teeth or fewer will be modified, see [page 109](#)

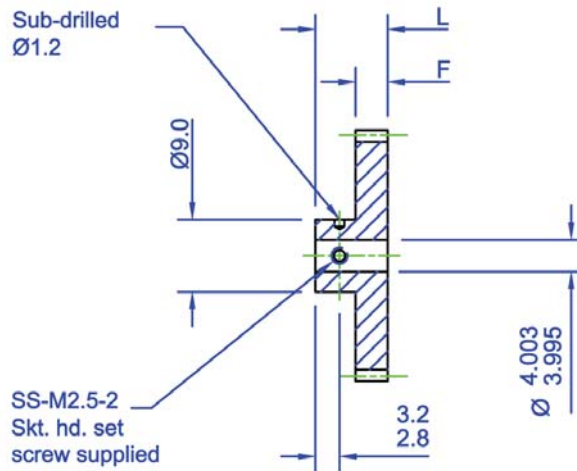
Alternative materials - replace **S1** in the part number with **B2** for brass, or **S9** for hardened stainless steel

- Standard gear quality AQ10 (AQ9 for 1.5 mod) - see [page 102](#)
- For suitable clamps - see [pages 98-99](#)
- Material and treatment specifications - see [page 105](#)
- Higher gear qualities - see [page 102](#)
- Imperial diametral pitches available
- Imperial 0.120" bore available

Associated Online Products

Anti-backlash pin hub gears
Shafts
Bearings
Pins

All dimensions in mm
General tolerances $\pm 0.13\text{mm}$
Pressure angle 20°



When $F=2, L=8$
 $F=4, L=10$

Part number selection table

Example Part No:- P06S1B4 F2A- 25						
Standard Modules	Basic Part Number		Face Width	Number of Teeth		
	Standard Materials #		Dim F	Min	Max	
	Stainless Steel	Aluminium Alloy			F2A	F4A
1.50	P150S1B4	P150A1B4	F2A- (2mm)	13 †	21	72
1.25	P125S1B4	P125A1B4		14 †	25	86
1.0	P10S1B4	P10A1B4		14 †	32	109
0.8	P08S1B4	P08A1B4		15 †	41	136
0.6	P06S1B4	P06A1B4		19	56	183
0.5	P05S1B4	P05A1B4	or	22	67	220
0.4	P04S1B4	P04A1B4	F4A- (4mm)	26	85	275
0.3	P03S1B4	P03A1B4		34	114	368
0.25	P025S1B4	P025A1B4		39	137	442
0.2	P02S1B4	P02A1B4		48	172	553

† Gears of 16 teeth or fewer will be modified, see [page 109](#)

Alternative materials - replace **S1** in the part number with **B2** for brass, or **S9** for hardened stainless steel

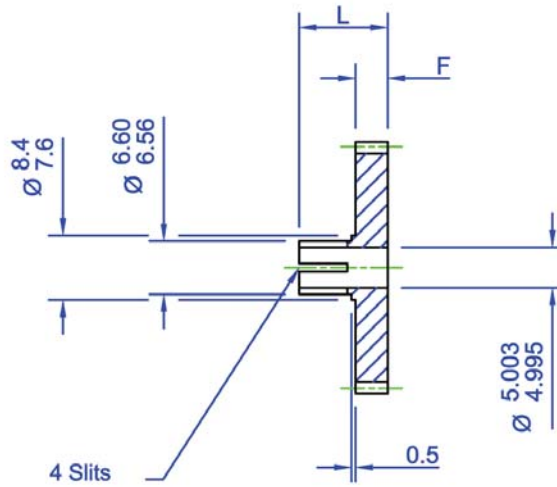
- Standard gear quality AQ10 (AQ9 for 1.5 mod) - see [page 102](#)
- Material and treatment specifications - see [page 105](#)
- Higher gear qualities - see [page 102](#)
- Imperial diametral pitches available
- Imperial 0.120" bore available



All dimensions in mm
 General tolerances $\pm 0.13\text{mm}$
 Pressure angle 20°

Associated Online Products
 Anti-backlash clamp hub gears
 Shafts
 Bearings
 Clamps

when F=2, L=9
 F=4, L=11



4

Part number selection table

Example Part No:- C06S1B5 F2A- 25						
Standard Modules	Basic Part Number Standard Materials #		Face Width	Number of Teeth		
	Stainless Steel	Aluminium Alloy	Dim F	Min	Max	
					F2A	F4A
1.50	C150S1B5	C150A1B5	F2A- (2mm) or F4A- (4mm)	14 †	21	72
1.25	C125S1B5	C125A1B5		14 †	25	86
1.0	C10S1B5	C10A1B5		15 †	32	109
0.8	C08S1B5	C08A1B5		17	41	136
0.6	C06S1B5	C06A1B5		19	56	183
0.5	C05S1B5	C05A1B5		20	67	220
0.4	C04S1B5	C04A1B5		23	85	275
0.3	C03S1B5	C03A1B5		27	114	368
0.25	C025S1B5	C025A1B5		30	137	442
0.2	C02S1B5	C02A1B5		35	172	553

† Gears of 16 teeth or fewer will be modified, see page 109

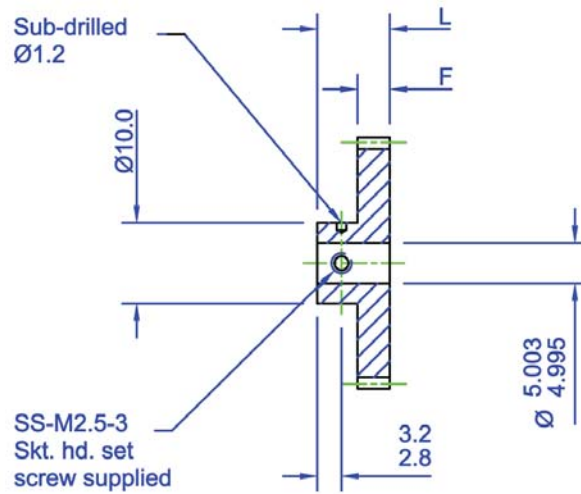
Alternative materials - replace **S1** in the part number with **B2** for brass, or **S9** for hardened stainless steel

- Standard gear quality AQ10 (AQ9 for 1.5 mod) - see page 102
- For suitable clamps - see pages 98-99
- Material and treatment specifications - see page 105
- Higher gear qualities - see page 102
- Imperial diametral pitches available
- Imperial 3/16" bore available

Associated Online Products

Anti-backlash pin hub gears
Shafts
Bearings
Pins

All dimensions in mm
General tolerances $\pm 0.13\text{mm}$
Pressure angle 20°



when $F=2, L=8$
 $F=4, L=10$

4

Part number selection table

Example Part No:- P06S1B5 F2A- 25						
Standard Modules	Basic Part Number Standard Materials #		Face Width	Number of Teeth		
	Stainless Steel	Aluminium Alloy	Dim F	Min	Max	
					F2A	F4A
1.50	P150S1B5	P150A1B5	F2A- (2mm)	14 †	21	72
1.25	P125S1B5	P125A1B5		14 †	25	86
1.0	P10S1B5	P10A1B5		15 †	32	109
0.8	P08S1B5	P08A1B5		17	41	136
0.6	P06S1B5	P06A1B5		21	56	183
0.5	P05S1B5	P05A1B5	or	24	67	220
0.4	P04S1B5	P04A1B5	F4A- (4mm)	29	85	275
0.3	P03S1B5	P03A1B5		37	114	368
0.25	P025S1B5	P025A1B5		43	137	442
0.2	P02S1B5	P02A1B5		53	172	553

† Gears of 16 teeth or fewer will be modified, see [page 109](#)

Alternative materials - replace **S1** in the part number with **B2** for brass, or **S9** for hardened stainless steel

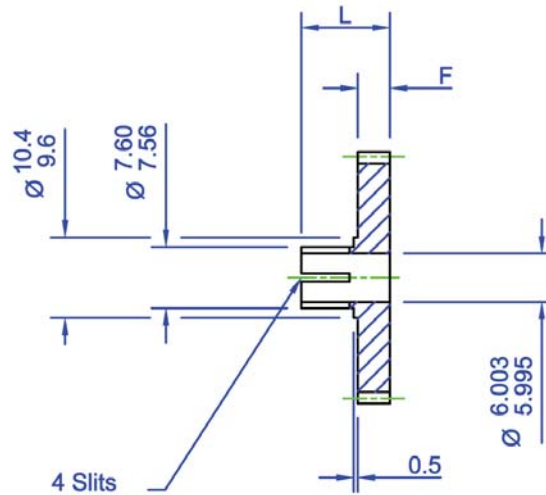
- Standard gear quality AQ10 (AQ9 for 1.5 mod) - see [page 102](#)
- Material and treatment specifications - see [page 105](#)
- Higher gear qualities - see [page 102](#)
- Imperial diametral pitches available
- Imperial 3/16" bore available



All dimensions in mm
 General tolerances $\pm 0.13\text{mm}$
 Pressure angle 20°

Associated Online Products
 Anti-backlash clamp hub gears
 Shafts
 Bearings
 Clamps

When F=3, L=10
 F=4, L=11
 F=6, L=13



4

Part number selection table

Example Part No:- C06S1B6 F3A- 75					
Standard Modules	Basic Part Number Standard Materials #		Face Width	Number of Teeth	
	Stainless Steel	Aluminium Alloy	Dim F	Min	Max
1.50	C150S1B6	C150A1B6	F3A- (3mm)	14 †	72
1.25	C125S1B6	C125A1B6		15 †	86
1.0	C10S1B6	C10A1B6		16 †	109
0.8	C08S1B6	C08A1B6	or	18	136
0.6	C06S1B6	C06A1B6	F4A- (4mm)	20	183
0.5	C05S1B6	C05A1B6		22	220
0.4	C04S1B6	C04A1B6	or	25	275
0.3	C03S1B6	C03A1B6	F6A- (6mm)	30	368
0.25	C025S1B6	C025A1B6		34	442
0.2	C02S1B6	C02A1B6		40	553

† Gears of 16 teeth or fewer will be modified, see [page 109](#)

Alternative materials - replace **S1** in the part number with **B2** for brass, or **S9** for hardened stainless steel

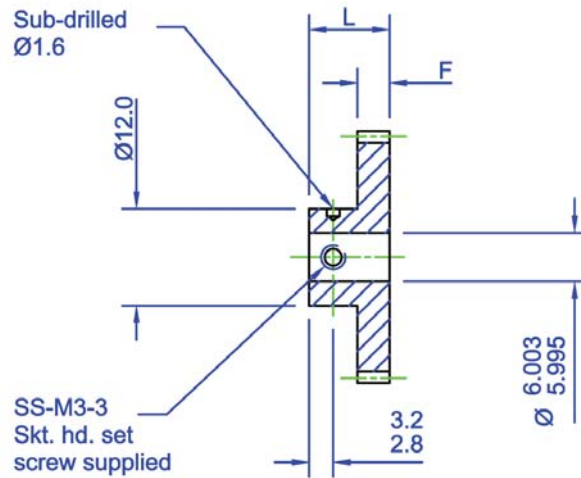
- Standard gear quality AQ10 (AQ9 for 1.5 mod) - see [page 102](#)
- For suitable clamps - see [pages 98-99](#)
- Material and treatment specifications - see [page 105](#)
- Higher gear qualities - see [page 102](#)
- Imperial diametral pitches available
- Imperial 1/4" bore available



Associated Online Products

Anti-backlash pin hub gears
Shafts
Bearings
Pins

All dimensions in mm
General tolerances $\pm 0.13\text{mm}$
Pressure angle 20°



When F=3, L=9
F=4, L=10
F=6, L=12

Part number selection table

Example Part No:- P06S1B6 F3A- 75					
Standard Modules	Basic Part Number Standard Materials #		Face Width	Number of Teeth	
	Stainless Steel	Aluminium Alloy	Dim F	Min	Max
1.50	P150S1B6	P150A1B6	F3A- (3mm)	14 †	72
1.25	P125S1B6	P125A1B6		15 †	86
1.0	P10S1B6	P10A1B6		16 †	109
0.8	P08S1B6	P08A1B6	or	19	136
0.6	P06S1B6	P06A1B6	F4A- (4mm)	23	183
0.5	P05S1B6	P05A1B6		27	220
0.4	P04S1B6	P04A1B6	or	33	275
0.3	P03S1B6	P03A1B6	or	43	368
0.25	P025S1B6	P025A1B6	F6A- (6mm)	50	442
0.2	P02S1B6	P02A1B6		62	553

† Gears of 16 teeth or fewer will be modified, see [page 109](#)

Alternative materials - replace **S1** in the part number with **B2** for brass, or **S9** for hardened stainless steel

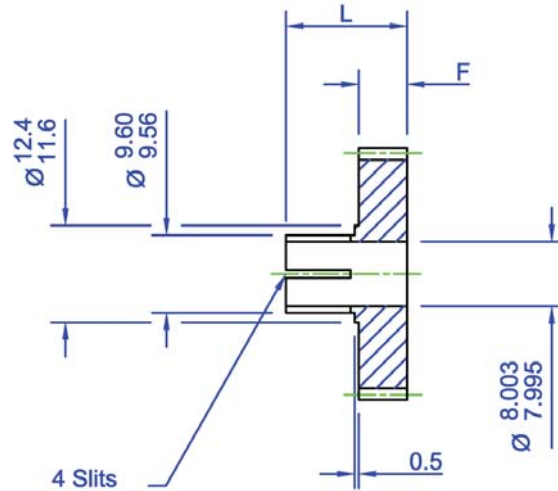
- Standard gear quality AQ10 (AQ9 for 1.5 mod) - see [page 102](#)
- Material and treatment specifications - see [page 105](#)
- Higher gear qualities - see [page 102](#)
- Imperial diametral pitches available
- Imperial 1/4" bore available



All dimensions in mm
 General tolerances $\pm 0.13\text{mm}$
 Pressure angle 20°

Associated Online Products
 Anti-backlash clamp hub gears
 Shafts
 Bearings
 Clamps

When $F=4, L=13$
 $F=6, L=15$



4

Part number selection table

Example Part No:- C06S1B8 F4A- 75					
Standard Modules	Basic Part Number Standard Materials #		Face Width	Number of Teeth	
	Stainless Steel	Aluminium Alloy	Dim F	Min	Max
1.50	C150S1B8	C150A1B8	F4A- (4mm) or F6A- (6mm)	16 †	72
1.25	C125S1B8	C125A1B8		17	86
1.0	C10S1B8	C10A1B8		18	109
0.8	C08S1B8	C08A1B8		20	136
0.6	C06S1B8	C06A1B8		24	183
0.5	C05S1B8	C05A1B8		26	220
0.4	C04S1B8	C04A1B8		30	275
0.3	C03S1B8	C03A1B8		37	368
0.25	C025S1B8	C025A1B8		42	442
0.2	C02S1B8	C02A1B8		50	553

† Gears of 16 teeth or fewer will be modified, see [page 109](#)

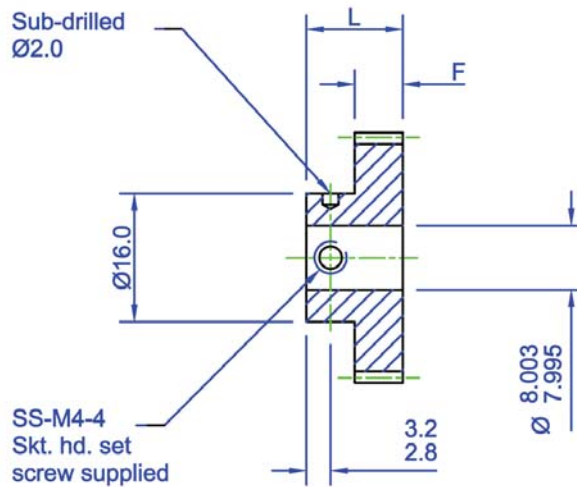
Alternative materials - replace **S1** in the part number with **B2** for brass, or **S9** for hardened stainless steel

- Standard gear quality AQ10 (AQ9 for 1.5 mod) - see [page 102](#)
- For suitable clamps - see [pages 98-99](#)
- Material and treatment specifications - see [page 105](#)
- Higher gear qualities - see [page 102](#)
- Imperial diametral pitches available
- Imperial 5/16" bore available

Associated Online Products

Anti-backlash pin hub gears
Shafts
Bearings
Pins

All dimensions in mm
General tolerances $\pm 0.13\text{mm}$
Pressure angle 20°



When $F=4, L=10$
 $F=6, L=12$

4

Part number selection table

Example Part No:- P06S1B8 F4A- 75					
Standard Modules	Basic Part Number Standard Materials #		Face Width	Number of Teeth	
	Stainless Steel	Aluminium Alloy	Dim F	Min	Max
1.50	P150S1B8	P150A1B8	F4A- (4mm) or F6A- (6mm)	16 †	72
1.25	P125S1B8	P125A1B8		17	86
1.0	P10S1B8	P10A1B8		20	109
0.8	P08S1B8	P08A1B8		24	136
0.6	P06S1B8	P06A1B8		30	183
0.5	P05S1B8	P05A1B8		35	220
0.4	P04S1B8	P04A1B8		43	275
0.3	P03S1B8	P03A1B8		56	368
0.25	P025S1B8	P025A1B8		66	442
0.2	P02S1B8	P02A1B8		82	553

† Gears of 16 teeth or fewer will be modified, see [page 109](#)

Alternative materials - replace **S1** in the part number with **B2** for brass, or **S9** for hardened stainless steel

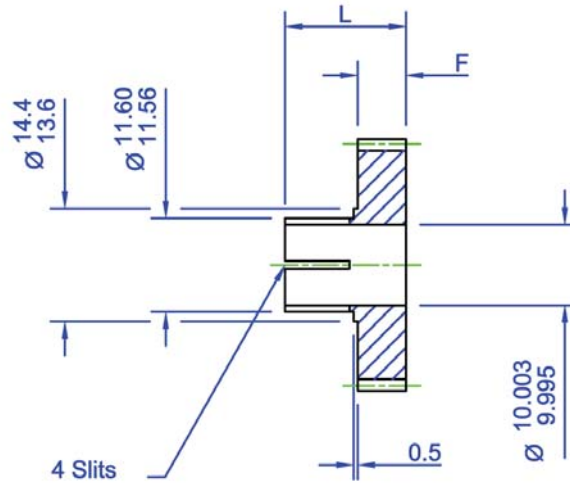
- Standard gear quality AQ10 (AQ9 for 1.5 mod) - see [page 102](#)
- Material and treatment specifications - see [page 105](#)
- Higher gear qualities - see [page 102](#)
- Imperial diametral pitches available
- Imperial 5/16" bore available



All dimensions in mm
 General tolerances $\pm 0.13\text{mm}$
 Pressure angle 20°

Associated Online Products
 Anti-backlash clamp hub gears
 Shafts
 Bearings
 Clamps

When F=4, L=13
 F=6, L=15



4

Part number selection table

Example Part No:- C06S1B10 F4A- 75					
Standard Modules	Basic Part Number Standard Materials #		Face Width	Number of Teeth	
	Stainless Steel	Aluminium Alloy	Dim F	Min	Max
1.50	C150S1B10	C150A1B10	F4A- (4mm) or F6A- (6mm)	17	72
1.25	C125S1B10	C125A1B10		18	86
1.0	C10S1B10	C10A1B10		20	109
0.8	C08S1B10	C08A1B10		23	136
0.6	C06S1B10	C06A1B10		27	183
0.5	C05S1B10	C05A1B10		30	220
0.4	C04S1B10	C04A1B10		35	275
0.3	C03S1B10	C03A1B10		44	368
0.25	C025S1B10	C025A1B10		50	442
0.2	C02S1B10	C02A1B10		60	553

Alternative materials - replace **S1** in the part number with **B2** for brass, or **S9** for hardened stainless steel

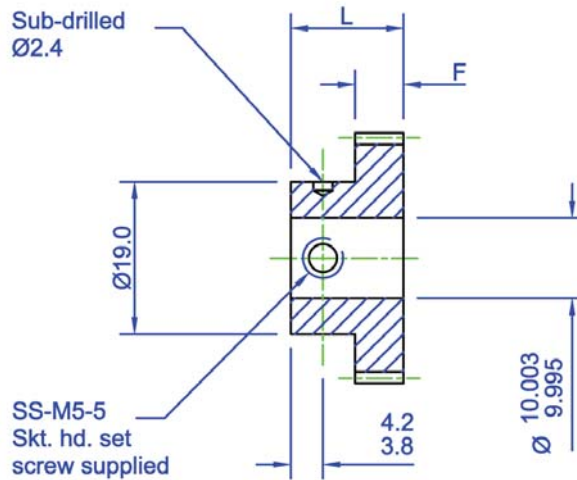
- Standard gear quality AQ10 (AQ9 for 1.5 mod) - see [page 102](#)
- For suitable clamps - see [pages 98-99](#)
- Material and treatment specifications - see [page 105](#)
- Higher gear qualities - see [page 102](#)
- Imperial diametral pitches available
- Imperial 3/8" bore available



Associated Online Products

Anti-backlash pin hub gears
Shafts
Bearings
Pins

All dimensions in mm
General tolerances $\pm 0.13\text{mm}$
Pressure angle 20°



When $F=4, L=12$
 $F=6, L=14$

Part number selection table

Example Part No:- P06S1B10 F4A- 75					
Standard Modules	Basic Part Number Standard Materials #		Face Width	Number of Teeth	
	Stainless Steel	Aluminium Alloy	Dim F	Min	Max
1.50	P150S1B10	P150A1B10	F4A- (4mm) or F6A- (6mm)	17	72
1.25	P125S1B10	P125A1B10		19	86
1.0	P10S1B10	P10A1B10		22	109
0.8	P08S1B10	P08A1B10		27	136
0.6	P06S1B10	P06A1B10		34	183
0.5	P05S1B10	P05A1B10		40	220
0.4	P04S1B10	P04A1B10		50	275
0.3	P03S1B10	P03A1B10		65	368
0.25	P025S1B10	P025A1B10		77	442
0.2	P02S1B10	P02A1B10		95	553

Alternative materials - replace **S1** in the part number with **B2** for brass, or **S9** for hardened stainless steel

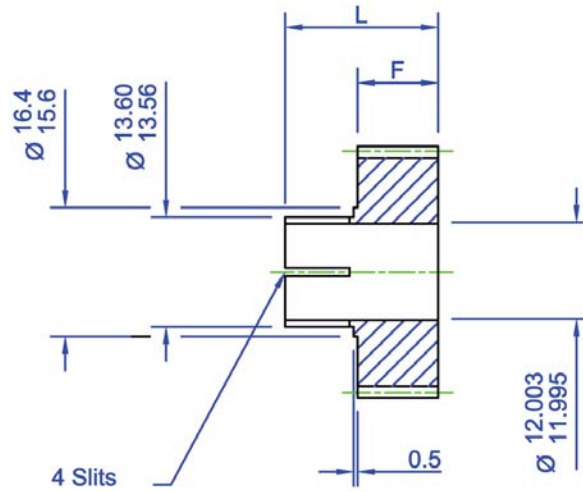
- Standard gear quality AQ10 (AQ9 for 1.5 mod) - see [page 102](#)
- Material and treatment specifications - see [page 105](#)
- Higher gear qualities - see [page 102](#)
- Imperial diametral pitches available
- Imperial 3/8" bore available



All dimensions in mm
 General tolerances $\pm 0.13\text{mm}$
 Pressure angle 20°

Associated Online Products
 Anti-backlash clamp hub gears
 Shafts
 Bearings
 Clamps

When $F=6, L=15$
 $F=10, L=19$



4

Part number selection table

Example Part No:- C06S1B12 F6A- 75					
Standard Modules	Basic Part Number Standard Materials #		Face Width	Number of Teeth	
	Stainless Steel	Aluminium Alloy	Dim F	Min	Max
1.50	C150S1B12	C150A1B12	F6A- (6mm) or F10A- (10mm)	18	72
1.25	C125S1B12	C125A1B12		20	86
1.0	C10S1B12	C10A1B12		22	109
0.8	C08S1B12	C08A1B12		25	136
0.6	C06S1B12	C06A1B12		30	183
0.5	C05S1B12	C05A1B12		34	220
0.4	C04S1B12	C04A1B12		40	275
0.3	C03S1B12	C03A1B12		50	368
0.25	C025S1B12	C025A1B12		58	442
0.2	C02S1B12	C02A1B12		70	553

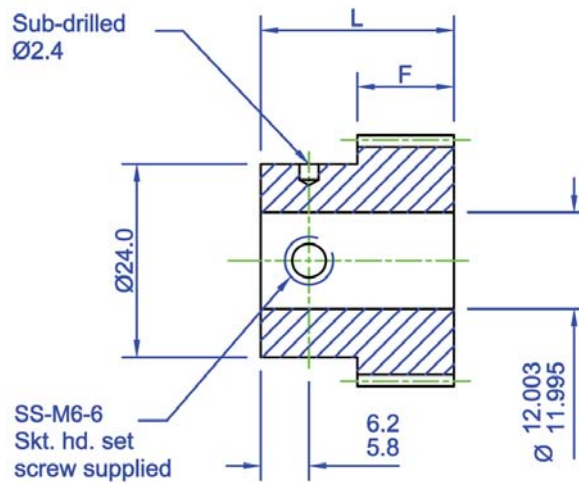
Alternative materials - replace **S1** in the part number with **B2** for brass, or **S9** for hardened stainless steel

- Standard gear quality AQ10 (AQ9 for 1.5 mod) - see [page 102](#)
- For suitable clamps - see [pages 98-99](#)
- Material and treatment specifications - see [page 105](#)
- Higher gear qualities - see [page 102](#)
- Imperial diametral pitches available
- Imperial 1/2" bore available

Associated Online Products

Anti-backlash pin hub gears
Shafts
Bearings
Pins

All dimensions in mm
General tolerances $\pm 0.13\text{mm}$
Pressure angle 20°



When $F=8, L=20$
 $F=12, L=24$

Part number selection table

Example Part No:- P06S1B12 F8A- 75					
Standard Modules	Basic Part Number Standard Materials #		Face Width	Number of Teeth	
	Stainless Steel	Aluminium Alloy	Dim F	Min	Max
1.50	P150S1B12	P150A1B12	F8A- (8mm) or F12A- (12mm)	19	72
1.25	P125S1B12	P125A1B12		22	86
1.0	P10S1B12	P10A1B12		26	109
0.8	P08S1B12	P08A1B12		32	136
0.6	P06S1B12	P06A1B12		41	183
0.5	P05S1B12	P05A1B12		48	220
0.4	P04S1B12	P04A1B12		59	275
0.3	P03S1B12	P03A1B12		77	368
0.25	P025S1B12	P025A1B12		92	442
0.2	P02S1B12	P02A1B12		113	553

Alternative materials - replace **S1** in the part number with **B2** for brass, or **S9** for hardened stainless steel

- Standard gear quality AQ10 (AQ9 for 1.5 mod) - see [page 102](#)
- Material and treatment specifications - see [page 105](#)
- Higher gear qualities - see [page 102](#)
- Imperial diametral pitches available
- Imperial 1/2" bore available