

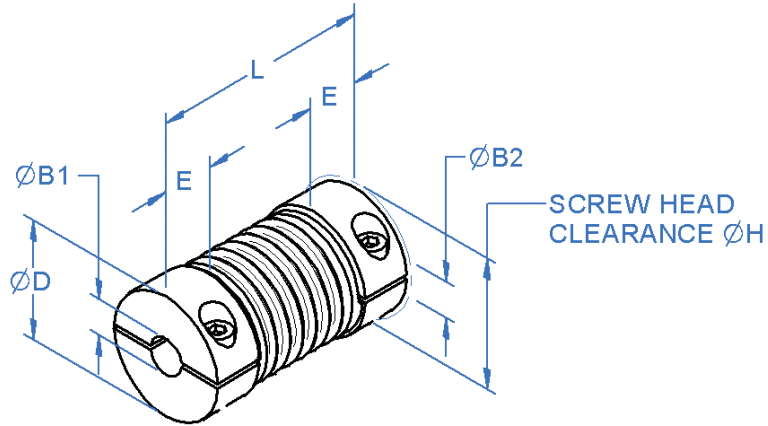


# Bellows Precision Couplings

3 - 12mm Bore

## General Information

All dimensions in mm  
 General tolerances:  
 ±0.4mm  
 Material:  
 End pieces  
 Anodised aluminium  
 Bellows  
 Phosphor bronze  
 or  
 All stainless steel



Phosphor bronze couplings fitted with alloy steel screws, black oiled as standard.  
 Stainless steel couplings fitted with stainless steel screws as standard.

## Associated Products

Shafts  
 Bearings  
 Leadscrews

Visit our online catalogue for associated products

## Part number selection table

Example Part No:- <b>RFB S 20C - 8-6</b>				Dimensions (mm)				
Basic Part No.	Material	Size	Standard Bore Sizes ØB1 and ØB2 (bore tolerance H8)	O/D ØD	ØH*	Length L	Hub Length E	Fitted Screw *
<b>RFB</b>	<b>B</b> (Ph. bronze)	<b>12C</b>	3‡ 4 5 6‡	12.0	14.0	23.5	7.5	M2
		<b>16C</b>	4‡ 5 6 8‡	16.0	17.3	26.5	9.0	M2.5
	<b>S</b> (St. steel)	<b>20C</b>	5‡ 6 8 10‡	20.0	20.0	32.0	10.0	M2.5
		<b>25C</b>	6‡ 8 10 12‡	25.0	25.7	36.5	12.0	M3
		<b>32C</b>	6‡ 8 10 12	32.0	33.2	42.0	13.5	M4

Imperial bores (1/4" & 3/8") available, please enquire.  
 ‡ Bore size only available on set screw type.  
 \* Figures not valid for set screw type, please enquire.

## Non-standard options, please enquire....

- Non-standard bore sizes, including imperial.
- Alternative materials.
- Custom designs.





## Technical specifications

Basic Part No.	Material	Size	Torsional Stiffness mNm/arcmin	Misalignment			Max Inertia * g.cm <sup>2</sup>	Max Mass * g
				Parallel mm	Angular deg	Axial mm		
RFB	B	12C	23.85	0.10	1.5	+0.4/-1.2	1.0	4.1
		16C	32.00	0.10	1.5	+0.4/-1.2	3.7	10.4
		20C	52.36	0.15	2.0	+0.6/-1.8	10.0	17.2
		25C	69.81	0.15	2.0	+0.6/-1.8	31.0	33.8
		32C	95.99	0.20	2.0	+0.8/-2.5	98.0	65.6
	S	12C	29.09	0.10	1.5	+0.4/-1.2	2.1	10.0
		16C	43.63	0.10	1.5	+0.4/-1.2	8.2	23.7
		20C	64.00	0.15	2.0	+0.6/-1.8	23.0	41.4
		25C	95.99	0.15	2.0	+0.6/-1.8	70.0	79.3
		32C	142.54	0.20	2.0	+0.8/-2.5	220.0	151.8

### General Information

All dimensions in mm  
 General tolerances:  
 ±0.4mm  
 Material:  
 End pieces  
 Anodised aluminium  
 Bellows  
 Phosphor bronze  
 or  
 All stainless steel

### Associated Products

Shafts  
 Bearings  
 Leadscrews

Visit our online catalogue for associated products

Misalignments of 1/3rd of those shown will extend the life of the coupling.

\* Figures not valid for set screw type, please enquire.

## Torque and speed capacity

Basic Part No.	Material	Size	Torque Capacity		Max Speed * rpm
			Rated Nm	Peak Nm	
RFB	B	12C	0.30	0.60	13000
		16C	0.50	1.00	9500
		20C	0.80	1.60	7700
		25C	1.30	2.60	6100
		32C	2.00	4.00	4800
	S	12C	0.50	1.00	13000
		16C	1.00	2.00	9500
		20C	1.50	3.00	7700
		25C	2.00	4.00	6100
		32C	3.00	6.00	4800

\* For set screw coupling, increase speed by 145%.

## Technical features

- Zero backlash.
- High torsional stiffness and low bearing loads.
- Complete absorption of eccentricity, angularity and end play by spring action of the bellows.
- Maintenance free.
- Recommended temperature range 0°C to +90°C.

