

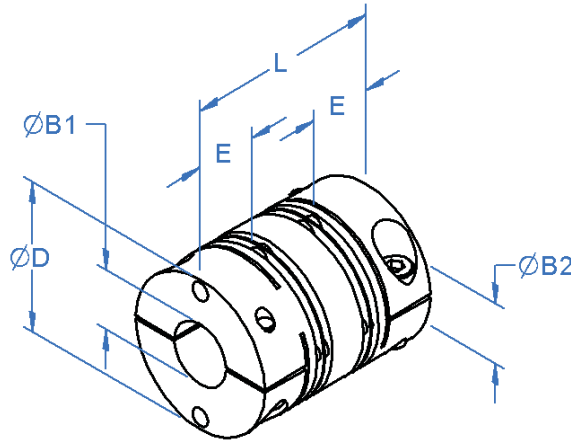


# Twin Disc Precision Couplings

5 - 12mm Bore

## General Information

All dimensions in mm  
 General tolerances:  
 ±0.4mm  
 Material:  
 Disc  
 Stainless steel.  
 End pieces  
 Anodised aluminium.



Twin disc couplings fitted with alloy steel screws, black oiled as standard.

## Associated Products

Shafts  
 Encoders

Visit our online catalogue for associated products

### Part number selection table

Example Part No:- <b>RDW 19C - 8-5</b>			Dimensions (mm)			
Basic Part No.	Size	Standard Bore Sizes ØB1 and ØB2 (bore tolerance +0.010/-0.000)	O/D ØD	Length L	Hub Length E	Fitted Screw
<b>RDW</b>	<b>19C</b>	<b>5    6    8</b>	19.0	27.0	8.0	M2
	<b>25C</b>	<b>6    8    10    12</b>	25.0	31.0	10.0	M2.5
	<b>32C</b>	<b>8    10    12</b>	32.0	40.0	12.0	M3

Imperial bores (1/4" & 3/8") available, please enquire.

### Non-standard options, please enquire...

- Non-standard bore sizes, including imperial.
- Set screw clamping.
- Stainless steel screws.





**Technical specifications**

Basic Part No.	Size	Torsional Stiffness mNm/arcmin	Misalignment			Max Inertia g.cm <sup>2</sup>	Max Mass g
			Parallel mm	Angular deg	Axial mm		
RDW	19C	58.18	0.12	1.5	±0.5	8.8	19
	25C	130.90	0.12			28.0	30
	32C	319.98	0.15			99.0	68

Misalignments of 1/3rd of those shown will extend the life of the coupling.

**General Information**

All dimensions in mm  
 General tolerances:  
 ±0.4mm  
 Material:  
 Disc  
 Stainless steel.  
 End pieces  
 Anodised aluminium.

**Associated Products**

Shafts  
 Encoders

Visit our online catalogue for associated products

**Torque and speed capacity**

Basic Part No.	Size	Torque Capacity		Max Speed rpm
		Rated Nm	Peak Nm	
RDW	19C	0.70	1.50	10000
	25C	1.00	2.00	8000
	32C	2.50	5.00	6000

**Technical features**

- Zero backlash.
- High torsional stiffness.
- Complete absorption of eccentricity and angularity by spring action of the discs.
- Maintenance free.
- Recommended temperature range ambient.

