



Micro Reli-a-Flex[®] Couplings

1.5 - 5mm Bore

General Information

All dimensions in mm
General tolerances:
±0.13mm
Material:

Pressure angle 20°

Notes

(1): Imperial sizes also available please enquire
(2): Bores may be left unalocromed

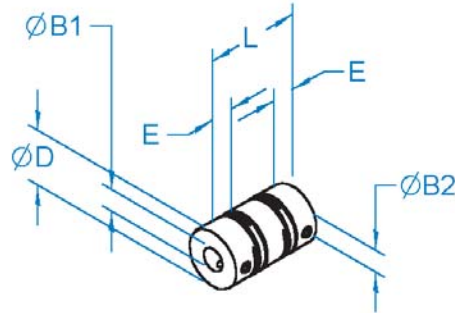
Patented

UK Number 2316735
US Number 6,203,437 B1
European Number EP 0922168 B1
Japanese Pending No.511360/1998

Associated Products

Clamp hub gears
Shafts
Bearings

Visit our online catalogue for associated products



RCL (long type) **RCS** (short type)

Couplings are chambered for ease of assembly and fitted with stainless steel screws.

Part number selection table

Example Part No:- RCS A 8 - 4-2				Dimensions (mm)												
Basic Part No.	Material	Size	Standard Bore Sizes ØB1 and ØB2 (bore tolerance +0.010/-0.000)			O/D ØD	Length L	Hub Length E	Fitted Screw							
			1.5	2	3	4	5	6.0	8.0	10.0	9.35	11.70	13.65	2.80	3.20	4.00
RCS (short)	A (Aluminium)	6	1.5	2	3		6.0	9.35	2.80	M1.2*						
		8		2	3	4	8.0	11.70	3.20	M1.6						
		10			3	4	5	10.0	13.65	4.00	M2					
RCL (long)	A (Aluminium)	6	1.5	2	3		6.0	12.50	2.80	M1.2*						
		8		2	3	4	8.0	14.50	3.20	M1.6						
		10			3	4	5	10.0	17.00	4.00	M2					

Maximum shaft intrusion when fitted = E+2mm.

* Coupling fitted with slotted head set screws.

Non-standard options, please enquire...

- Non-standard bore sizes, including imperial.
- Alternative materials.
- Custom designs.



Standard Product Sales : ☎ +44 (0)1484 601060 📠 +44 (0)1484 601061
www.reliaflex.co.uk sales@rpmechatronics.co.uk

© Reliance Precision Mechatronics LLP



Technical specifications

Basic Part No.	Material	Size	Torsional Stiffness mNm/arcmin	Radial Compliance microns/N	Misalignment			Max Inertia g.cm ²	Max Mass g
					Parallel mm	Angular deg	Axial mm		
RCS (short)	A	6	1.22	21.0	0.020	1.7	±0.06	0.03	0.65
		8	2.53	35.0	0.050	2.0	±0.10	0.11	1.30
		10	4.89	28.0	0.060	2.0	±0.17	0.33	2.30
RCL (long)	A	6	1.25	79.0	0.040	1.7	±0.06	0.05	0.95
		8	2.53	102.0	0.100	2.0	±0.10	0.15	1.70
		10	4.89	83.0	0.120	2.0	±0.17	0.43	3.00

Specifications vary according to bore size. For exact figures, please enquire.

General Information

All dimensions in mm
General tolerances: ±0.13mm
Material:
Pressure angle 20°

Notes

(1): Imperial sizes also available please enquire
(2): Bores may be left unalocromed

Torque and speed capacity

Basic Part No.	Material	Size	Typical Torque Capacity			Max Speed rpm
			Reversing Nm	Non Reversing Nm	Peak Nm	
RCS (short)	A	6	0.10	0.15	0.25	70000
		8	0.20	0.30	0.50	40000
		10	0.30	0.45	0.75	35000
RCL (long)	A	6	0.10	0.15	0.25	32000
		8	0.20	0.30	0.50	24000
		10	0.30	0.45	0.75	22000

Specifications vary according to bore size. For exact figures, please enquire.

Patented

UK Number 2316735
US Number 6,203,437 B1
European Number EP 0922168 B1
Japanese Pending No.511360/1998

Associated Products

Clamp hub gears
Shafts
Bearings

Visit our online catalogue for associated products

Technical features - Apply to the whole Reli-a-Flex® range

- Zero backlash, reliable one-piece construction.
- Unique design maximises torsional stiffness without inducing high bearing loads.
- Minimal velocity and positional fluctuations.
- Over 50,000,000 test cycles at rated load and 80% offset without failure.
- Maintenance free.
- Recommended temperature range -80°C to +80°C.



www.rpmechatronics.co.uk